

INSTRUCTION MANUAL

ICE MAKER REF : ZB-14



To ensure proper use of this appliance and your safety, please read the following instructions completely before operating this appliance.

English – Original



Index

1. Important safety instructions	3
2. Features	5
3. Notes before operation	5
4. Structure	6
5. Operation procedures	7
6. Maintenance	8
7. Technical parameters	8
8. Trouble shooting	9
9. Diagram	10
10. Exploded View and Spare parts list	11
11. Standards and directives	13



1. IMPORTANT SAFETY INSTRUCTIONS

When using electrical appliances, basic safety precautions should be followed to reduce the risk of fire, electric shock, and injury to persons of property. Read all instructions before using any appliance.

- This appliance can be used by children aged from 8 years and above and persons with reduced physical, sensory or mental capabilities or lack of experience and knowledge if they have been given supervision or instruction concerning use of the appliance in a safe way and understand the hazards involved. Children shall not play with the appliance. Cleaning and user maintenance shall not be made by children without supervision.

WARNING : Keep ventilation openings, in the appliance enclosure or in the built-in structure, clear of obstruction.

WARNING : Do not use mechanical devices or other means to accelerate the defrosting process or ice harvesting process, other than those recommended by the manufacturer.

WARNING : Do not damage the refrigerant circuit.

WARNING : Do not use electrical appliances inside the food storage compartments of the appliance, unless they are of the type recommended by the manufacturer.

WARNING : When positioning the appliance, ensure the supply cord is not trapped or damaged.

WARNING : Do not locate multiple portable socket-outlets or portable power supplies at the rear of the appliance.

- This appliance is intended to be used in household and similar applications such as:
 - staff kitchen areas in shops, offices and other working environments;
 - farm houses and by clients in hotels, motels and other residential type environments;
 - bed and breakfast type environments;
 - catering and similar non-retail applications.
- The instructions shall include the substance of the following:
 - Opening the door for long periods can cause a significant increase of the temperature in the compartments of the appliance.
 - Clean regularly surfaces that can come in contact with food and accessible drainage systems.
 - Clean water tanks if they have not been used for 48h; flush the water system connected to a water supply if water has not been drawn for 5 days.
- Fill with potable water only.
- If the supply cord is damaged, it must be replaced by the manufacturer, its service agent or similarly qualified persons in order to avoid a hazard.
- Do not tip over.
- Do not store explosive substances such as aerosol cans with a flammable propellant in this appliance.
- Do not run the power cord carpeting or other heat insulators. Do not cover the cord. Keep cord away from traffic areas, and do not submerge in water.

- Do not use other liquid to make the ice-cube other than water.
- Do not clean your ice maker with flammable fluids. The fumes can create a fire hazard or explosion.
- We do not recommend the use of an extension cord, as it may overheat and become a risk of fire. Unplug the ice maker before cleaning or making any repairs or servicing.
- If the ice maker is brought in from outside in wintertime, give it a few hours to warm up to room temperature before plugging it in.
- The grounding must be good.

The wires in this mains lead are colored in accordance with the following code:

- Live wire (coloured brown) to terminal marked L
- Neutral wire (coloured blue) to terminal marked N
- Earth wire (coloured green and yellow) to terminal marked E

Caution : risk of fire / flammable materials

Refrigerant R600a / R290, this gas is natural gas with high environmental compatibility that is, however, also combustible. When transporting and installing the appliance, care should be taken to ensure that no parts of the refrigerating circuit are damaged. Refrigerant leaked from the refrigerating pipes could ignite, if leaking is detected, to avoid any potential source of ignition (spark, naked flames etc.), please open window or door, and keep good ventilating.



Correct disposal of this product

This marking indicates that this product should not be disposed with other household wastes throughout the EU. To prevent possible harm to the environment or human health from uncontrolled waste disposal, recycle it responsibly to promote the sustainable reuse of material resources. To return your used device please use the return and collection systems or contact the retailer where the product was purchased. They can take this product for environmental safe recycling.



2. FEATURES

According to the requirement of the international and domestic market of household appliance, we designed our Desk-top Automatic Ice-Maker. It is compact and nice in appearance and it is micro-computerized and it makes ice quickly. The structure of the ice-maker consists of the water storage tank, water pump, water inlet tube, water box, ice making device, ice tilting device, ice pusher and ice storage basket, etc. Different from the ice making procedures of the traditional commercial ice-makers, the whole procedures of the desk-top ice maker, water filling ~ ice making ~ water releasing ~ ice dropping ~ ice transfer and ice storage, are micro-computerized. It is reliable and convenient for operation. When the situations like water shortage or ice full occur, the relative indicators on the operation panel will light accordingly and the ice maker will stop operation. Small ice, normal ice or big ice, three different sizes of the ice are available for customer's selection from the operation panel. The ice maker is suitable for the use of families, bars, hotels and supermarkets, etc.

3. NOTES BEFORE OPERATION

1. The incline angle of the cabinet could not be over 45° during transportation.

Don't make ice maker upside-down in case the compressor or refrigerating system troubles occur.

2. The ice maker should be placed on horizontal and structurally sound ground and away from heat source and corrosive gas. At least about 150mm room should be left around the ice maker to ensure the fine ventilation and enough spare space should be left to ensure that you can control it easily.

3. Please adjust the feet when placing the ice maker somewhere, otherwise the water level in water box will be effected and so do the ice. Before using the ice maker for the first time, you should wait about 12 hours after positioning it in a proper place.

4. Clean the inner liner, ice storage basket, water storage tank, water box, ice pusher and evaporator.

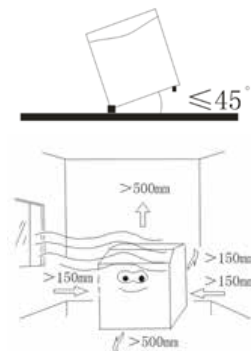
5. Power: AC220-240V/50Hz

6. The rated capacity of wire should be over 10A. The wire could be consisted by single ply or multiplies. The rated current of fuse is 5A.

7. Fill water into water storage tank.

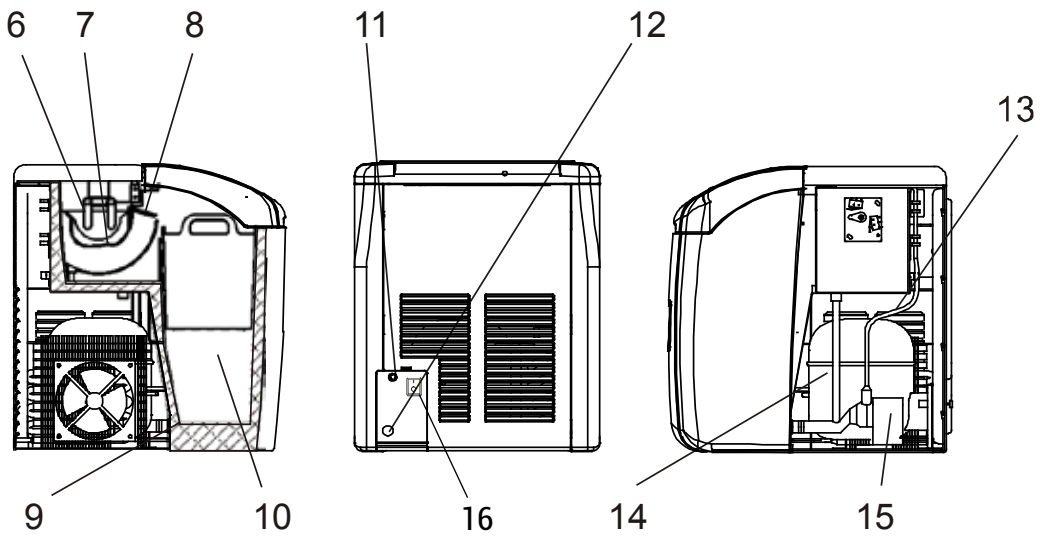
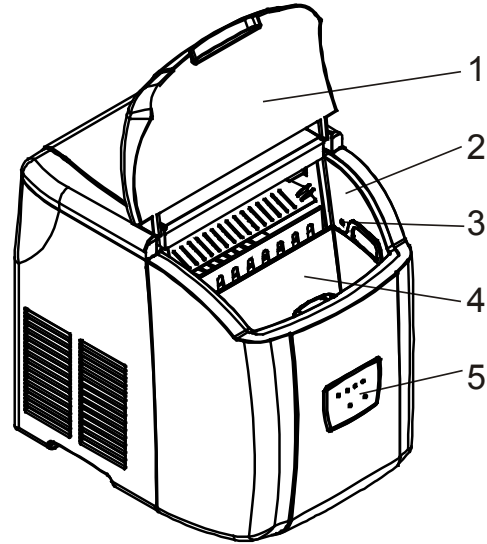
Fill drinkable water only. Make sure that the water level is not over the fill max in the cabinet or not over the bottom of ice storage basket.

8. The plug must be easy to reach when you have installed the ice maker.



4. STRUCTURE

1. Lid
2. Inner liner
3. Ice sensor
4. Ice Storage basket
5. Operation panel
6. Evaporator
7. Water box
8. Ice pusher
9. Water strainer
10. Water storage tank
11. Power cord
12. Water drainage screw
13. Water inlet tube
14. Compressor
15. Water pump
16. Power switch: This switch can control the mains power supply of the appliance.





5. OPERATION PROCEDURES

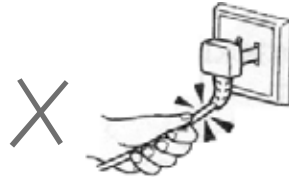
1. Open the lid, take out the Ice-Storage-Basket and fill the drinkable water into the water storage tank directly. Make sure that water level is not over the bottom of the ice storage basket.
2. Connect power and press the start button on the operation board. Ice maker will begin to work. Different ice sizes could be selected by pressing the select button as per your requirement.
3. The ice making procedures are as follows:
 - 1) Water is pumped into water box from water storage tank.
 - 2) Ice making cycle begins, the evaporator dipped into the water box starts to make ice;
 - 3) It will take about 7 min ~ 15 min (according to customer's requirement) for the ice making cycle, after it is finished, water box will tilt forward and the remaining water will flow back to the water storage tank.
 - 4) Then water box will tilt backward and the ice pusher will push the ice cubes into the ice storage basket. After the water box turns back to the level position, the second ice making cycle begins.
4. The ice maker check the water volume in the Water-Storage-Tank automatically. If the water volume is too low to make normal ice cubes, it will stop working. When you add to appropriate water into the Water-Storage-Tank, the indicator of water low will go out and it will restart to work automatically.
5. When the ice cubes are collected to touch or near the ice sensor, the ice maker will stop working and the indicator of ice full will light; when you take out the ice cubes, the indicator of ice full will go out and it will restart to work automatically.
6. If the indicators of ice full and water low glitter at the same time, please turn off the machine , unplug the power cord and check whether there are ice cubes blocked in the water box, if so, please take out the cubes carefully; if no ice blocked, please turn the water box slightly by hand, 3~5 minutes later, restart the machine. If there is no ice blocking and also it is no use by turning the box slightly, the ice maker may need repair. Please ask qualified technician to repair.
7. There are three sizes of the ice cubes available for customers' selection. The bigger the ice cube is selected, the longer time is needed to make it. When the ambient temperature is low (lower than 15), the small or normal ice cubes are suggested to choose to avoid the connection between the cubes.
8. Every time when taking out the ice cubes and reinstall the basket, please push the basket downward to its original position to make sure the temperature sensor is above the basket so as to ensure the normal ice making cycle.

6. MAINTENANCE

1. To ensure the cleanliness of the ice cubes, water in the water storage tank must be replaced every 24 hours.
2. The water strainer need to be cleaned regularly lest the impurities in water come into the water pump to effect the normal operation of machine.
3. If the compressor stops for any reasons such as lacking of water, too much ice, power off, etc., Don't restart it right away. You should restart it at least 3 minutes later to protect the compressor.
4. Screw off the drainage screw to drain the remaining water in the tank when the ice maker will be unused for long time.
5. Please clean the ice maker regularly. When cleaning, disconnect power and take out the ice cubes, use diluted cleaning agent to clean the inside and outside surface of the maker. Water spraying for ice-maker is forbidden. Also the chemical diluted agents like acid agent, gasoline, volatile oil and de-dirt powder, etc. are forbidden to be used for cleaning. The drinkable water should be used to clean the inside of the machine at last step.



6. When plugging or unplugging, the plug should be held by hand and the wires should not be dragged heavily.



7. If the power cord is damaged, only the same kind cord (appointed by manufacturer or provided by services center) could be used for replacement.
8. Do not use mechanical devices or other means to accelerate the defrosting process, other than those recommended by the manufacturer.
9. Do not damage the refrigerant circuit.

7. TECHNICAL PARAMETERS

Model:	ZB-14
Climate type:	T
Power:	AC220-240V/50Hz
Rated current:	0.7A
Power Input:	100W
Ice making capacity:	10kg/24h
Electric shock protection class:	I
Dimensions (LxDxH):	305*380*380mm

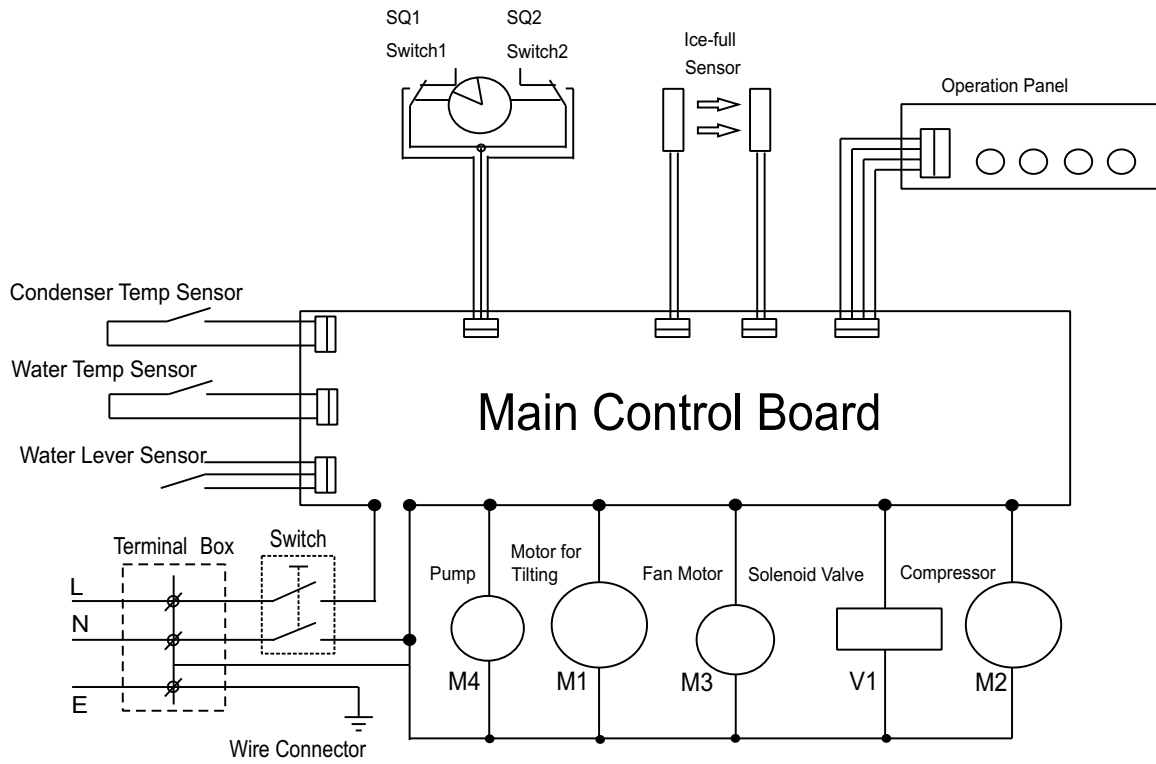


8. TROUBLE SHOOTING

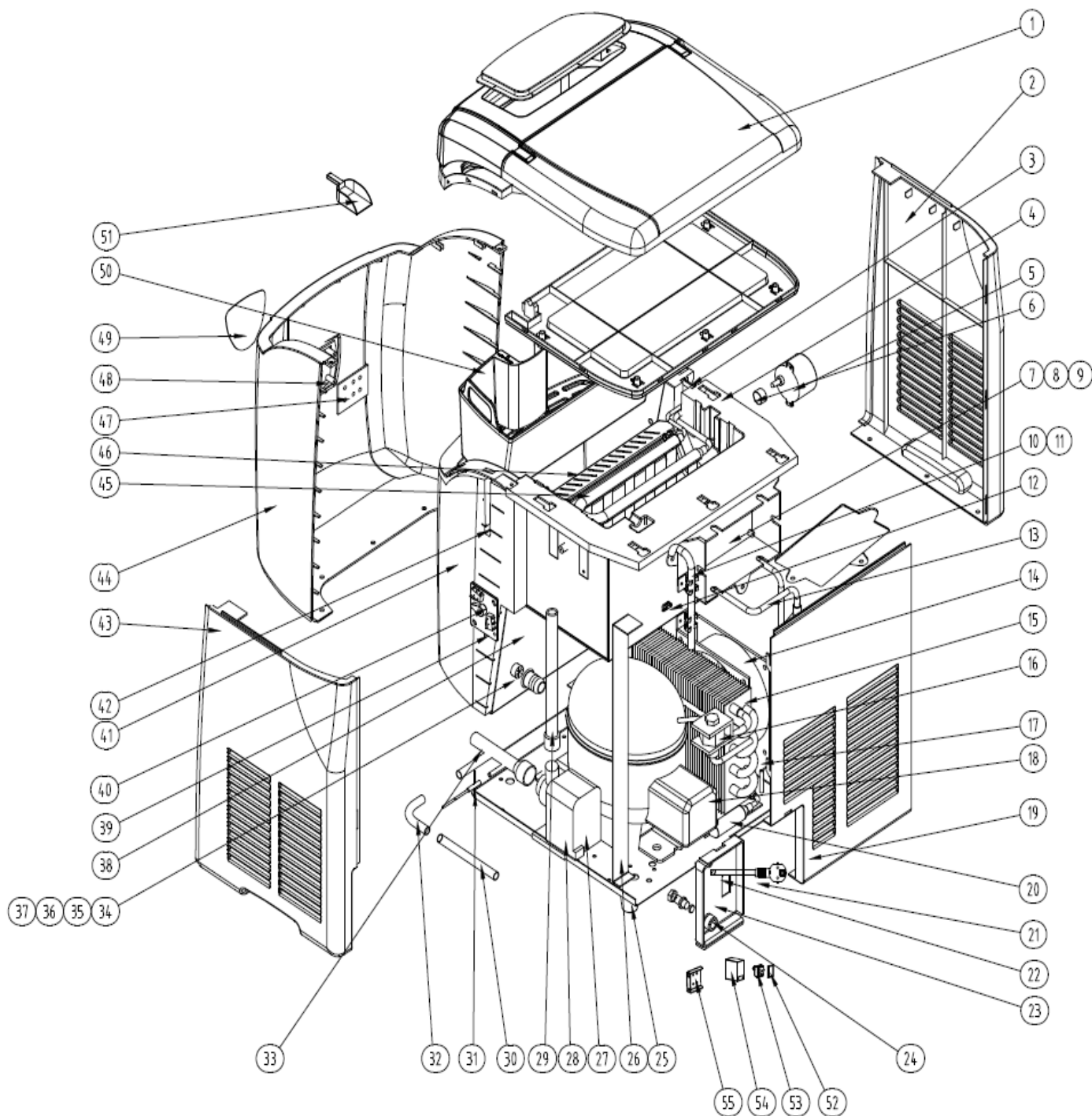
TROUBLE	CAUSE	REMEDY
The power indicator is light. The compressor works abnormally with noise buzz.	The voltage is out of the limitation.	Stop the ice maker and restart it until the voltage is normal.
Water Low indicator is light.	There is no water or water level is too low.	Fill water and it will restart to work automatically.
Ice full indicator is light.	There is too much ice. The temperature is too low.	Take out some ice. Put the ice maker to a warmer place.
There is no indicator light on the board.	The power is not well-connected.	Make the power well-connected.
The indicators of water shortage and ice full glitter at the same time.	The water-box is blocked by the ice cubes. The water box cannot tilt.	Check relative parts after unplugging. Take out some ice cubes that nblock the water box or ice pusher carefully. Turn the water box slightly by hand. 3-5 minutes later try to restart.
The ice is made in block.	Ice making time is too long.	Stop the machine and reset the ice making time. Start the machine after the ice block has been melted.
Compressor runs, but no ice is made.	Refrigerant leaks. There is block in refrigerating system.	Recharge refrigerant and make leakage testing. Charge N2 to check whether the system is blocked. Replace the dryer-filter. Check whether the fan is working.

Note: It is normal that the temperature of the compressor surface could be 70-90 when it is working.

9. DIAGRAM



10. EXPLODED VIEW AND SPARE PARTS LIST



N°.	Description	Ref.	Qty
1	Complete Door		1
2	Left-side Board		1
3	Evaporator Block		1
4	Inner Liner		1
5	Synchronous motor	ZB-14-1	1
6	Axis sleeve		1
7	Control Board Box		1
8	Control Board Box Cover		1
9	Control Board	ZB-14-2	1
10	Inlet Pipe		1
11	Inlet Pipe Fixer		2
12	Power Cords Fixer		1
13	Suction pipe		1
14	Fan Motor	ZB-14-3	1
15	Condenser		1
16	Electromagnetic valve		1
17	Condensing sensor	ZB-14-4	1
18	Compressor		1
19	Back Panel		1
20	Filter		1
21	Power cord		1
22	AC Socket		1
23	Plastic Wire Fixing Board		1
24	Water Outlet Valve Assembly	ZB-14-5	1
25	Feet		4
26	Back Fortified Fixer		1
27	Bottom Board		1
28	Pump	ZB-14-6	1

29	Tube		1
30	Drainage Pipe Connector		1
31	Water temperature sensor	ZB-14-7	1
32	drainage elbow connection pipe		1
33	Silica Gel Pipe		1
34	Drainage Pipe		1
35	Seal Washer		1
36	Nut of drainage pipe		1
37	Strainer		1
38	Downside Bottom Board		1
39 40	Positional Switch/Water Box Rotational Axis		2
41	Heat Preservation Foam		1
42	Ice full sensor		2
43	Right Side Board		1
44	Front Panel		1
45	Evaporator		1
46	Water Box Assembly		1
47/48/49	Operation Panel/Operation Panel Fixer/ Operation Panel sticker		1
50	Ice Storage Basket		1
51	Ice Scoop	ZB-14-8	1
52	Waterproof Cap		1
53	Power switch		1
54	Switch fixing board		1
55	Power cords fixing board		1

11. STANDARDS AND DIRECTIVES

Meaning of crossed out wheeled dustbin:

Do not dispose of electrical appliances as unsorted municipal waste, use separate collection facilities.

Contact your local government for information regarding the collection systems available.

If electrical appliances are disposed of in landfills or dumps, hazardous substances can leak into the groundwater and get into the food chain, damaging your health and well-being.

When replacing old appliances with new ones, the retailer is legally obligated to take back your old appliance for disposals at least free of charge.

The device complies with current EU standards and directives. If necessary, we will send you the corresponding declaration of conformity.

Packaging disposal

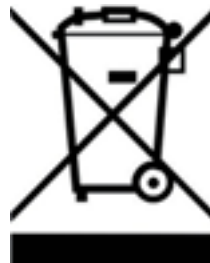
Please separate the packaging materials accordingly and return them to the responsible collection points for recycling and environmental housing.



Device disposal

once the appliance has been used up, dispose of it properly at a collection point for electrical appliances. Electrical appliances do not belong in household waste.

Your responsible administration will inform you about the addresses and opening hours of collection points. This is the only way to ensure that old appliances are properly disposed of and recycled. Thank you very much!





CE